

Caratteristiche *Characteristics*

Tipo di installazione	<i>Type of installation</i>	Parete/Soffitto	<i>Wall/ceiling</i>
Materiale	<i>Material</i>	Alluminio	<i>Aluminum</i>
Finitura/colore	<i>Finish/colour</i>	Alluminio anodizzato	<i>Anodized aluminum</i>
Dimensioni	<i>Dimensions</i>	18.4 mm x 19,7mm. L. 3000mm max	

Accessori - Accessories

Cover opalina bianca PMMA <i>Diffuser opal white PMMA</i> G100062399301	Cover satinata PMMA <i>Diffuser satined PMMA</i> G100062399371	Cover trasparente PMMA <i>Diffuser clear PMMA</i> G100062399401	Cover opalina bianca 500kg <i>Diffuser opal white 500kg</i> G100062399311	Cover trasparente PMMA lente 30° <i>Diffuser clear PMMA lens 30°</i> G100062399331
---	--	---	---	--



Cover satinata PMMA lente 30°
Diffuser satined PMMA lens 30°
G100062399341



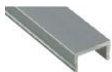
Diffusore alto, bianco opalino, PMMA 180°
Diffuser high, opal white, PMMA, 180°
G100062399361



Cover opalina bianca PMMA 20% più efficiente
Diffuser reflector opal white PMMA 20% more effective
G100062399351



Profilo in alluminio anodizzato
Mounting profile aluminum anodized
G100062399321



Canalina in alluminio
Aluminum cable duct
G100062399121



Tappi in alluminio
Aluminum-end caps
G100062399110



Tappi in alluminio alti
Aluminum-end caps high
G100062399127



Tappo opalino PC 180°
End cap, opal, PC, 180°
G100062399369



Set di staffe
Bracket set
G100062399934



Kit per montaggio a soffitto in metallo
Kit for ceiling mount, metal
G100065300160

